

## Original Research Article

# Anti-proliferative effect of *Moringa oleifera* Lam (Moringaceae) leaf extract on human colon cancer HCT116 cell line

Jintana Tragulpakseerojn<sup>1,2</sup>, Naoto Yamaguchi<sup>2</sup>, Perayot Pamonsinlapatham<sup>3</sup>, Penpun Wetwitayaklung<sup>4</sup>, Tatsuro Yoneyama<sup>5</sup>, Naoki Ishikawa<sup>5</sup>, Masami Ishibashi<sup>5</sup> and Auayporn Apirakaramwong<sup>1\*</sup>

<sup>1</sup>Department of Biopharmacy, <sup>2</sup>Department of Molecular Cell Biology, Graduate School of Pharmaceutical Sciences, Chiba University, Inohana 1-8-1, Chuo-ku, Chiba 260-8675, Japan, <sup>3</sup>Department of Health-Related Informatics, <sup>4</sup>Department of Pharmacognosy, Faculty of Pharmacy, Silpakorn University, Nakhon Pathom 73000 Thailand, <sup>5</sup>Department of Natural Products Chemistry, Graduate School of Pharmaceutical Sciences, Chiba University, Inohana 1-8-1, Chuo-ku, Chiba 260-8675, Japan

\*For correspondence: **Email:** [apirakaramwong\\_a@su.ac.th](mailto:apirakaramwong_a@su.ac.th); **Tel:** +66-3425-5800; **Fax:** +66-3425-5801

Received: 4 November 2016

Revised accepted: 18 January 2017

## Abstract

**Purpose:** To investigate the *in vitro* anti-proliferative effect and mechanism of action of *Moringa oleifera* Lam. leaf extract on human colon carcinoma HCT116 cell line.

**Methods:** *M. oleifera* leaves were extracted with methanol. It was fractionated by Sephadex LH-20 column chromatography. Several fractions were identified by thin layer chromatography (TLC), proton nuclear magnetic resonance (<sup>1</sup>H NMR) and mass spectrometry (MS). The growth inhibitory activity and mechanism of action of the extracts in HCT116 colon cancer cells were investigated by 3-(4, 5-dimethylthiazolyl)-2,5-diphenyltetrazolium bromide (MTT) assay and Western blotting.

**Results:** Successive fractions from *M. oleifera* leaf crude extracts by column chromatography were combined into four pooled batches (MOL1 - MOL4) according to their absorbance at 260 nm and TLC pattern. MOL2 and MOL3 contain astragalin and isoquercetin, respectively. The results from MTT assay indicated that cell proliferation was significantly ( $p < 0.05$ ) inhibited in a concentration-dependent fashion, especially by MOL2, MOL3 and MOL4. MOL2 and MOL3 exhibited a stronger cell growth inhibition than their major ingredients. The anti-proliferative activity of MOL2 - MOL4 in HCT116 colon cancer cells was mediated by downregulation of ERK1/2 phosphorylation.

**Conclusion:** *M. oleifera* leaf extract has a strong anti-proliferative activity which is exerted by decreasing ERK1/2 phosphorylation. Thus, the extract has a potential for use in cancer chemoprevention.

**Keywords:** *Moringa oleifera*, Anti-proliferation, Colon cancer, AKT, ERK1/2 phosphorylation, Chemoprevention

Tropical Journal of Pharmaceutical Research is indexed by Science Citation Index (SciSearch), Scopus, International Pharmaceutical Abstract, Chemical Abstracts, Embase, Index Copernicus, EBSCO, African Index Medicus, JournalSeek, Journal Citation Reports/Science Edition, Directory of Open Access Journals (DOAJ), African Journal Online, Bioline International, Open-J-Gate and Pharmacy Abstracts

## INTRODUCTION

Cancer is one of the leading diseases that results in hundreds of thousand deaths among Thais [1-3]. Many of the naturally derived anti-cancer drugs successfully became current drugs such

as paclitaxel, vincristine, and vinblastine. Several wild edible plant species in Thailand have played a prominent role in traditional medicine [4,5]. *Moringa oleifera* Lam. (*M. oleifera*) is one of the most common plant found in Southeast Asia that has been widely used [6]. It is also a valuable

plant because it is rich in vitamins, protein, carbohydrate, fatty acid, fiber and phytochemical components. The phytochemical components present in *M. oleifera* such as glycosides, alkaloids, flavonoids and phenolics are thought to have anti-oxidant and anti-cancer effects [7]. Each part of *M. oleifera* showed different effects on cancer cells [6,8-10]. Moringa root extracts inhibit epithelial ovarian cancer growth [11]. Extracts of *M. oleifera* leaves have been found to elicit anti-oxidant, anti-inflammatory, antibacterial and anti-fungal activities [12,13]. Moreover, *M. oleifera* leaf extracts inhibit human epidermal carcinoma (KB) cell growth analyzed using 3-(4,5-dimethylthiazol-2-yl)-2,5-diphenyltetrazolium bromide (MTT) assay [14].

Recently, astragalin, isoquercetin and cryptochlorogenic acid were discovered to be major active components in *M. oleifera* leaf extract [15]. Both astragalin and isoquercetin have been shown to possess anti-oxidant and anti-inflammatory activities [16,17]. Isoquercetin has been studied and found as a major bioactive component in St. John's wort or Klamathweed (*Hypericum perforatum* L.) [18]. Furthermore, isoquercetin and astragalin are present in vegetables and fruits such as broccoli, onions, cherries, apples [19].

The major cellular functions known to be mediated by mitogen-activated protein kinases (MAPKs) are cell differentiation and transformation, cell proliferation, cell death and survival. MAPK proteins are serine-threonine kinases that include extracellular signal-regulated kinase (ERK), p38, and c-Jun NH2-terminal kinase. The PI3K/AKT and RAS/RAF/MEK/ERK signaling pathways are frequently mutationally activated in human cancer. AKT and ERK signaling pathways have been shown to coregulate several proteins promoting cancer cell survival and tumor growth [20]. Thus, the direct inhibition of AKT and ERK signaling pathways may provide a potential strategy for cancer therapy.

A previous study showed that bioactive fractions from column chromatography separation of *M. oleifera* leaf extract exhibit apoptotic induction activity in HCT 116 colon cancer cells [21]. However, the bioactive compounds from *M. oleifera* leaves have not been clarified.

The present investigation was undertaken to identify the phytochemical compounds from the bioactive fractions and to elucidate the mechanism that may be responsible for the anti-proliferative activity.

## EXPERIMENTAL

### Plant material and extraction

Fresh *M. oleifera* Lam. leaves were collected during January 2012 - December 2013 from Amphoe Mueng, Nakhon Pathom, Thailand. Leaves were cleaned and subsequently dried at 50-60 °C for 2 - 3 days. The dried leaves were blended by homogenization and extracted in 100 % methanol for 3 days using a Soxhlet extractor. Alcohol solvent was completely removed from total extraction solution by using an evaporator. The crude extracts were kept in a light protected glass ware at < 4 °C until used.

### Column chromatography on Sephadex LH-20

The dried crude extract of *M. oleifera* leaves was dissolved in 70 % (v/v) ethanol at 1 mg/mL and then filtered with 0.45 µm filter membranes (Merck Millipore, Bedford, MA, USA) immediately before use. The fractionation of crude extract was conducted by size exclusion chromatography as described previously [21]. Briefly, the extract was separated into fractions with 2.5 x 37.5 cm glass chromatography column (Bio-Rad Laboratories, Richmond, CA, USA) filled with expanded Sephadex LH-20 gel particles (10 - 25 µm; GE Healthcare, Waukesha, WI, USA) in 70 % (v/v) ethanol. The column was eluted with 70 % (v/v) ethanol. Collected fraction of 5 mL each was monitored by SmartSpec™ 3000 spectrophotometer ( $\lambda_{\text{max}}$  = 260 nm; Bio-Rad Laboratories, Richmond, CA, USA). Based on spectral readings, four pooled, combined, fractions (pf1-pf4) were collected. The four combined fractions were evaporated and freeze-dried. Then, they were stored under refrigeration (-20 °C) and in a dark container.

### General procedure

Optical rotations were measured with a JASCO-1020 polarimeter (Tokyo, Japan). MS was measured on a JEOL spectrometer (JEOL, Tokyo, Japan). <sup>1</sup>H NMR spectra were recorded on an ECA 600 spectrometer (JEOL, Tokyo, Japan) with deuterated solvent. Silica gel presqualene (PSQ) 100B or ODS Chromatorex (Fuji Sylisia, Kasugai, Japan) or Sephadex LH-20 (GE Healthcare Waukesha, WI, USA) were used to carry out column chromatography. Thin layer chromatography (TLC) was done with glass pre-coated ODS RP18 F<sub>254</sub> plates (Merck, Darmstadt, Germany), developing with gradient methanol-H<sub>2</sub>O (40:60-80:20). Spots were detected using UV absorbance at 254 and 365 nm and by spraying with 50 % H<sub>2</sub>SO<sub>4</sub>, then, the

plate was heated at 90 – 100 °C for at least 2 - 3 min.

## Extraction and isolation

Dried methanol extract of *M. oleifera* leaves was subjected to gel filtration on Sephadex LH-20 with four pooled fractions (MOL1 - MOL4) collected. The bioactive fractions, MOL2 and MOL3 were resuspended in methanol and then subjected to octadecylsilyl (ODS) column with different mobile phases. MOL2 was eluted with a gradient mixture of 0 - 100 % methanol in H<sub>2</sub>O while the MOL3 was eluted with a gradient mixture of 30 - 100 % methanol in H<sub>2</sub>O. The dried MOL2 (40 mg) was eluted, collected and then analyzed by TLC, giving 38 fractions which were pooled into sixteen fractions (F1 - F16) based on the TLC patterns. Fraction F6, a yellow color spot on TLC plate, was concentrated using a rotary evaporator, yielding approximately 2.6 mg of dried extract. F6 (2.6 mg) was further separated by gel filtration, Sephadex LH-20 column, eluted with 80 % methanol and then analyzed by TLC. Based on the TLC patterns, the eluted subfractions were combined into thirteen subfractions (sf1 - sf13). The sf13 (0.9 mg, compound A) was identified using <sup>1</sup>H NMR and MS. The dried MOL3 (10 mg) was subjected to ODS column and eluted with similar

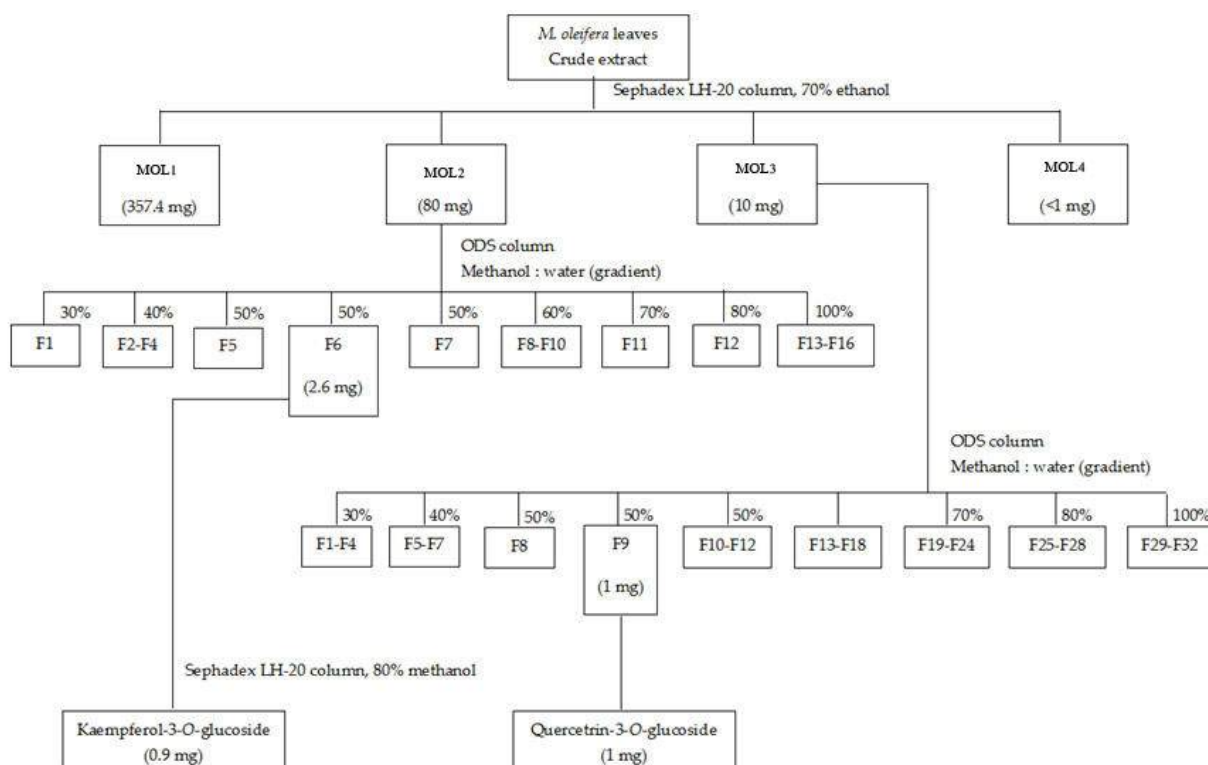
procedures. The collected eluates were monitored using TLC to obtain 29 fractions (F1 - F29). F9 (1 mg, compound B) with a yellow color spot on TLC plate was identified using <sup>1</sup>H NMR. The scheme of isolation is shown in Figure 1. The isolated pure compounds were identified by comparing their <sup>1</sup>H NMR and MS with published data.

## Cell culture

Human colorectal carcinoma cells (HCT 116) were kindly provided by collaborators. The cells were propagated in Dulbecco's Modified Eagle Medium (DMEM medium (Gibco, Carlsbad, CA, USA) supplemented with 10% heat-inactivated fetal bovine serum (FBS), 100 U/mL penicillin, and 100 mg/mL streptomycin (Sigma). Cells were cultured in a humidified CO<sub>2</sub> incubator at 37 °C with 5 % CO<sub>2</sub>/air. Cells were assayed during the exponential phase of growth.

## Cell proliferation assay using tetrazolium salt (MTT)

Cell proliferation was measured by MTT assay (Sigma-Aldrich). Briefly, cells (1.2 x 10<sup>4</sup> cells) were seeded in a 96-well flat-bottomed microplate in 100 µL medium overnight before treatment.



**Figure 1:** Separation scheme of *M. oleifera* leaf extract with gel filtration on Sephadex LH-20 after getting four pooled fractions

After 24 h, the media were removed and replaced with fresh complete medium. Cells were exposed to graded concentrations of test compounds (4 - 5 dilutions in triplicate; MOL1, MOL2, MOL3, MOL4, astragalin, and isoquercetin) for 24 and 48 h. 0.5 % DMSO-treated cells was used as a negative control. Both astragalin and isoquercetin were obtained from Sigma-Aldrich. After the incubation period, each well was washed with phosphate-buffered saline (PBS) and replaced with 1 mg/mL MTT for 4 h incubation. The resulting crystals produced from the MTT assay was dissolved in 100  $\mu$ L of 100 % DMSO and quantified at 550 nm using a microplate reader (Model No; AOPUS01 and A153601; A Packard bioscience company). The proportion of cell viability was calculated as previously described [14].

### Cell extraction and western blotting

HCT116 cells were plated at a density of  $1 \times 10^5$  cells/mL onto a 6-well plate and incubated overnight. Varying concentrations of the *M. oleifera* pooled fractions were added into the cells for 48 h in triplicate cultures, compared with positive and negative controls. After treatment with the samples, cells were washed with PBS, pH 7.4 and lysed with lysis buffer (with 1 mM  $\text{Na}_3\text{VO}_4$  and 1 mM NaF inhibitor) on ice for 15 min. Cell lysates were centrifuged at 13,000 g for 10 min at 4 °C, and protein concentrations of supernatants were estimated by Bradford protein assay. Equivalent amounts of total cellular proteins (5 - 25  $\mu$ g) were separated by 8 – 12 % SDS-PAGE. Each protein sample was added with sample loading buffer, boiled for 5 min and kept on ice immediately prior to electrophoresis through a 8 – 12 % SDS-PAGE at 110 volts for 90 min. Proteins were then transferred onto PVDF membranes. The process was carried out for 1 h on ice. For immunodetection of the proteins, membranes were blocked in 5 % BSA in TBS-T buffer for 1 h. Probing of PVDF membranes with primary antibodies (pERK1/2 polyclonal antibody #9101, Akt antibody #9272 or p38 MAPK antibody #9212) at 4 °C overnight and horseradish peroxidase-conjugated secondary antibodies was performed, and signals were detected by enhanced chemiluminescence (ECL). All primary antibodies were purchased from Cell Signaling Technology. The chemiluminescence reagent was poured into the membrane and incubated for 1 - 5 min at room temperature and then excess chemiluminescence reagent was removed. The membrane was placed and covered with plastic wrap. The imaging film was put on top of the membrane for 5 - 10 min depending on the signal

of the protein. The film was developed and analyzed with ImageJ® software.

### Statistical analysis

All experimental measurements were tested in triplicate. The results are expressed as mean  $\pm$  standard deviation (SD). Statistical analysis of data was evaluated using one-way analysis of variance (ANOVA). Significance level was set at  $p < 0.05$ .

## RESULTS

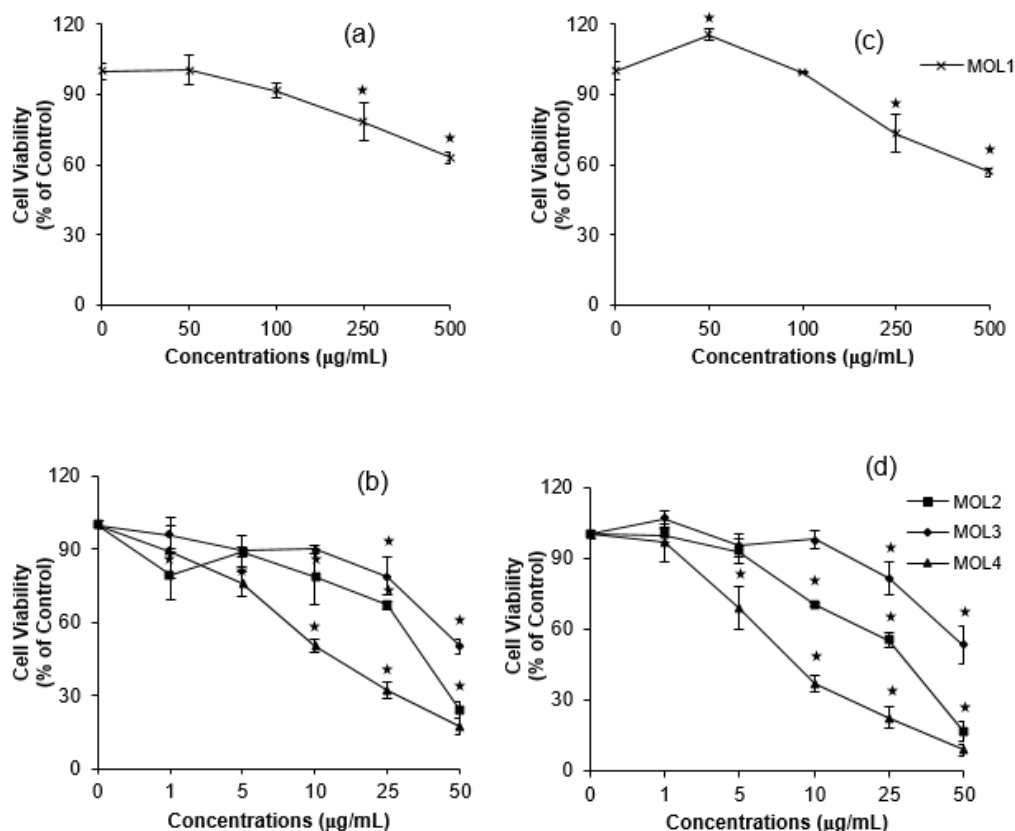
### Anti-proliferative activity

Our preliminary results suggested that the crude extract from *M. oleifera* leaves shows inhibitory effect on cell growth in HCT 116 cells. The crude extracts from *M. oleifera* leaves were separated by size exclusion chromatography with Sephadex LH-20 as described previously [21]. The pooled fractions, MOL1 - MOL4, from the crude extract, were assessed against HCT 116 colon cells for anti-proliferative activity in 24 h (Figure 2a, 2b) and 48 h (Figure 2c, 2d) using an MTT assay. After 24 and 48 h treatment with individual pooled fraction, it was shown that HCT 116 cell growth was significantly inhibited in a concentration-dependent fashion, especially when treated with MOL2, MOL3, and MOL4.

### MOL2 and MOL3 from *M. oleifera* leaf extract

The bioactive MOL2 and MOL3 were subjected to further isolation and identification analysis due to their drastic anti-proliferative activity, while MOL4 was not done because of recovery yield limit. Compound A from MOL2 and B from MOL3 were got as a yellow amorphous powder. The  $^1\text{H}$  NMR spectra of A and B showed the characteristic signals of flavonoid glycosides. The molecular formula of A and B were indicated as  $\text{C}_{21}\text{H}_{20}\text{O}_{11}$  and  $\text{C}_{21}\text{H}_{20}\text{O}_{12}$ , respectively by MS, which gave molecular ion peak at  $m/z$  447 and 463 [M-H] $^-$ . In addition to the mass of compound A and B  $^1\text{H}$  NMR spectra showed signals corresponding to a sugar moiety. Thus, the structure of A and B was determined as kaempferol 3-O-glucoside (astragalin) and quercetin 3-O-glucoside (isoquercetin), respectively.

**Astragalin:** yellow amorphous powder, Molecular formula:  $\text{C}_{21}\text{H}_{20}\text{O}_{11}$ . LC-MS:  $m/z$  447 [M-H] $^-$ .  $^1\text{H}$  NMR (600 MHz,  $\text{CO}_3\text{OD}$ ):  $\delta$  ppm 7.92 (d,  $J=8.72$ , 2H, H-2', 6'), 6.75 (d,  $J=8.98$ , 2H, H-3', 5'), 6.21 (d,  $J=2.05$ , 1H, H-8), 6.03 (d, 2.05, 1H, H-6), 5.08 (d,  $J=7.18$ , 1H, H-1" of Glc) [22].



**Figure 2:** The anti-proliferative activity of each pooled fraction (MOL1-MOL4) on HCT116 cells at different concentrations for 24 h (a, b) and 48 h (c, d). Each value represents the mean  $\pm$  SD of the triplicate of cultures, \* $p < 0.05$ , significantly different from the negative control treated with 0.5 % of DMSO

**Table 1:** Toxicity of each pooled fraction (MOL1 - MOL4) in HCT116 and NHF cells at 24 h and 48 h

Sample	IC <sub>40</sub> (approx, µg/mL)			
	24 h		48 h	
	HCT116	NHF	HCT116	NHF
MOL1	517.54	> 500	462.60	>500
MOL2	25.84	106.19	19.02	51.52
MOL3	41.38	52.50	44.02	39.20
MOL4	9.50	17.04	5.04	17.70
Astragalin	> 500	NA	> 500	NA
Isoquercetin	68.52	NA	5.41	NA

NA = not determined

**Isoquercetin:** yellow amorphous powder, Molecular formula: C<sub>21</sub>H<sub>20</sub>O<sub>12</sub>, LC-MS: m/z 463 [M-H]<sup>-</sup>. <sup>1</sup>H NMR (600 MHz, CO<sub>3</sub>OD)  $\delta$  ppm 7.70 (d,  $J=2.31$ , 1H, H-2'), 7.58 (dd,  $J=2.31$ , 8.46, 1H, H-6'), 6.86 (d,  $J=8.46$ , 1H, H-5'), 6.35 (d,  $J=2.05$ , 1H, H-8), 6.17 (d,  $J=2.05$ , 1H, H-6), 5.23 (d,  $J=7.69$ , 1H, H-1'' of Glc).

The peaks assigned in <sup>1</sup>H NMR corresponded to previous studies [23,24].

### Cell proliferation inhibitory effect

In order to confirm that the anti-proliferative activity of *M. oleifera* leaf extracts may come

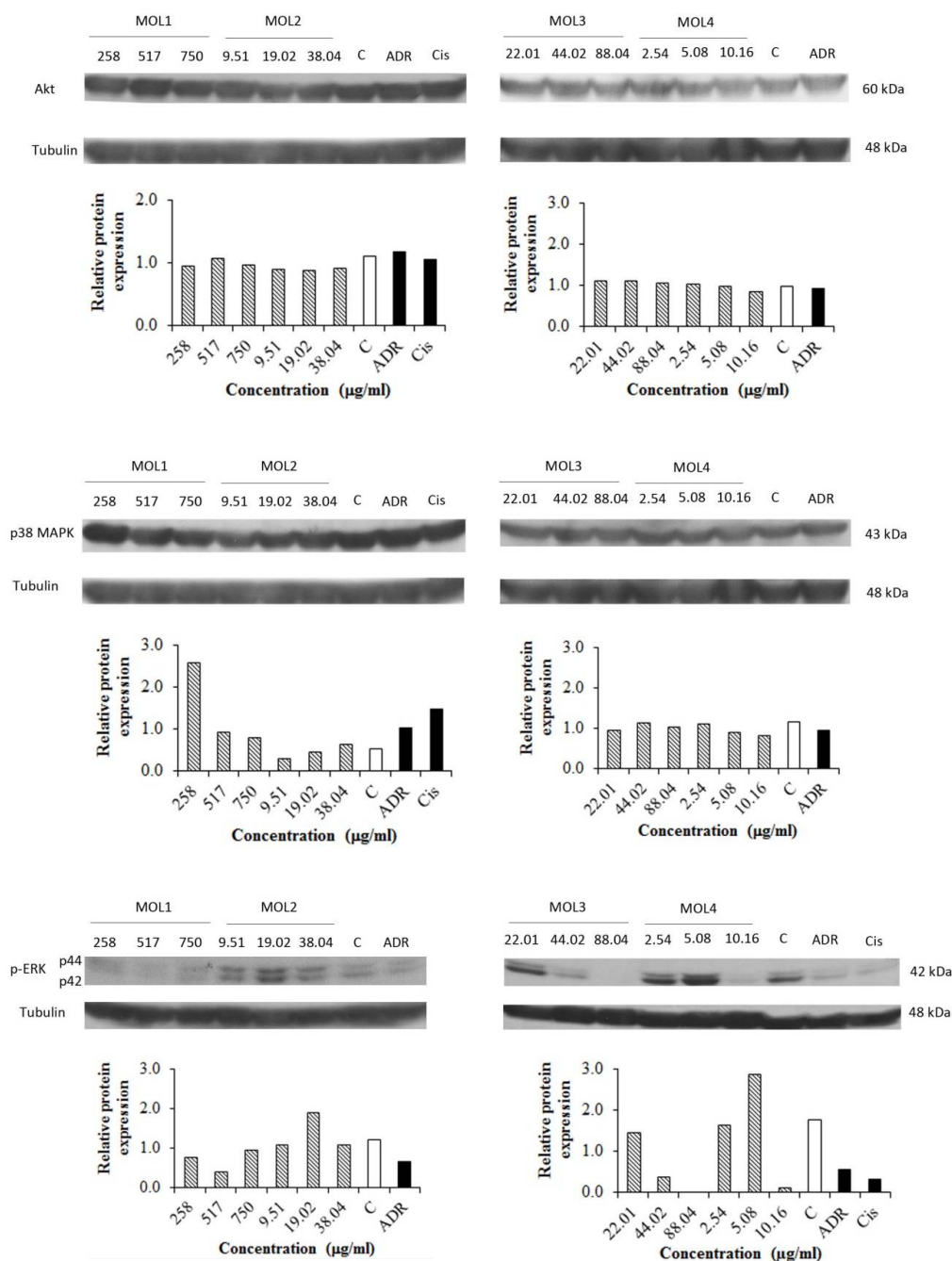
from their major compounds and may have a different effect on normal and cancer cells, the determination of cytotoxicity in normal human fibroblast (NHF) and HCT116 cells was done at 24 and 48 h (Table 1). Because insufficient protein lysate obtained when IC<sub>50</sub> was used in the cell, IC<sub>40</sub> was used instead in Western blot analyses.

The results showed that the cytotoxic effect of *M. oleifera* leaf extracts in HCT116 cells was higher than that in NHF cells. Although, MOL2 contained astragalin, the cytotoxicity of MOL2 was likely higher than its major component. In contrast, MOL3 contained isoquercetin, the

cytotoxicity of MOL3 was higher than its major component in 24 h of treatment but less than that in 48 h. Moreover, the cytotoxicity associated with *M. oleifera* leaf extracts in HCT116 was higher than that in the NHF normal cell line, demonstrating that normal cells are more resistant to the extract than cancer cells.

To clarify the anti-proliferation mechanism of *M. oleifera* leaf extracts in 48 h treated HCT116 cells, the protein expression of ERK, AKT, and p38 MAPK was further examined using the total

protein from cells treated with various concentrations (two-fold of  $IC_{40}$ ,  $IC_{40}$  and one-half fold of  $IC_{40}$  value). Two anti-cancer drugs, adriamycin, and cisplatin, were used as positive control. Our results showed that HCT116 treated with *M. oleifera* leaf extracts resulted in drastically decreased p-ERK1/2 and little decreased AKT expression, but not p38 MAPK in a concentration dependent manner. Moreover, both adriamycin and cisplatin treatment showed a similar effect (Figure 3).



**Figure 3:** Effect of each pooled fraction (MOL1-MOL4) in HCT116 cells at 48 h of treatment on AKT (upper panel), p38 MAPK (middle panel) and phospho-ERK1/2 (lower panel) expression using western blot and ImageJ® software analysis. Tubulin was used as loading control. Adriamycin (0.1 μg/mL) and cisplatin (125 μg/mL) were used as positive control

## DISCUSSION

In Thailand, colon cancer is considered the most common cancer in men and the third in women [3]. The development and invasion process of cancers including colon cancer is correlated with PI3K/AKT and RAS/RAF/MEK/ERK pathways [20]. The concomitant activation of AKT and ERK pathway leads to enhanced cancer progression and metastasis. Chemoprevention by natural products to inhibit or prevent tumorigenesis is a new strategy for cancer control [25]. *M. oleifera* has long been used in Thai cuisine. Its leaves are a good source of nutrients and bioactive compounds [26]. There are many reports suggesting that *M. oleifera* leaves possess anti-cancer properties with their anti-oxidant activity [8,9,11,14] or by down-regulating NF- $\kappa$ B [27].

The present study focused on anti-proliferation activity and mechanism of action of four pooled fractions from *M. oleifera* leaf extract against HCT116 colon cancer cell line. In accordance with previous study, this method of extraction i.e. column chromatography is also effective in separation of major flavonoid glycosides, astragalin, and isoquercetin in *M. oleifera* leaves, [15]. Both astragalin and isoquercetin are shown to have antioxidant and anti-proliferative activities [28]. Therefore, the presence of astragalin and isoquercetin in *M. oleifera* leaf may be responsible for the promising property in chemoprevention. That was suggested by a significant suppression of HCT116 cell proliferation with the pooled fractions, especially MOL2-MOL4.

As mentioned above, ERK and AKT pathways are important for proliferation and survival of cancer cells. Furthermore, there are few studies on the effect of *M. oleifera* leaf on these pathways in colorectal cancer. The results show that the phosphorylation of ERK1/2 was dramatically inhibited by *M. oleifera* leaf fractions, along with a small reduction in AKT expression, but not p38 MAPK.

Taken together, the results show that *M. oleifera* leaf extract inhibits HCT116 cell proliferation through downregulation of ERK1/2 phosphorylation.

## CONCLUSION

Column chromatography has successfully been used for the separation of two flavonoid glycosides, astragalin, and isoquercetin, from bioactive fractions of *M. oleifera* leaf extracts. The bioactive fractions exhibit anti-proliferative activity against colon cancer cells that is different

from standard compounds. A likely mechanism of action of the anti-proliferative activity is pERK1/2 downregulation. Further studies are necessary to investigate the precise components as well as other molecular mechanisms of action.

## DECLARATIONS

### Acknowledgement

The authors thank Dr Chatchai Chinpaisan for his kind suggestion in the manuscript preparation. This study was supported in part by Excellent International Student Scholarship between Chiba University/Silpakorn University, Silpakorn University Research and Development Institute (Grant no. SURDI 58/01/12), Thailand Research Fund (TRF) (no. MRG5680119), and Grants-in-Aid for Scientific Research (NY, 15K07922) from Japanese Ministry of Education, Culture, Sports, Science and Technology.

### Conflict of Interest

No conflict of interest associated with this work.

### Contribution of Authors

The authors declare that this work was done by the authors named in this article and all liabilities pertaining to claims relating to the content of this article will be borne by them.

### Open Access

This is an Open Access article that uses a funding model which does not charge readers or their institutions for access and distributed under the terms of the Creative Commons Attribution License (<http://creativecommons.org/licenses/by/4.0>) and the Budapest Open Access Initiative (<http://www.budapestopenaccessinitiative.org/read>), which permit unrestricted use, distribution, and reproduction in any medium, provided the original work is properly credited.

## REFERENCES

1. Dobrossy L. Cancer mortality in central-eastern Europe: facts behind the figures. *Lancet Oncol* 2002; 3: 374-381.
2. Neumann J, Boerries M, Köhler R, Giaisi M, Krammer PH, Busch H, Li-Weber M. The natural anticancer compound rocaglamide selectively inhibits the G1-S-phase transition in cancer cells through the ATM/ATR-mediated Chk1/2 cell cycle checkpoints. *Int J Cancer* 2014; 15(134): 1991-2002.
3. Information Technology Division. National Cancer Institute, B. Cancer report year 2011, National Cancer

- Institute (NCI): Bangkok, Thailand, 2011.
4. Chanwitheesuk A, Teerawutgulrag A, Rakariyatham N. Screening of antioxidant activity and antioxidant compounds of some edible plants of Thailand. *Food Chem* 2005; 92: 491-497.
5. Manosroi J, Dhumnantorn P, Monosroi A. Anti-proliferative activity of essential oil extracted from Thai medicinal plants on KB and P388 cell lines. *Cancer Lett* 2006; 235: 114-120.
6. Anwar F, Latif S, Ashraf M, Gilani AH. *Moringa oleifera*: A food plant with multiple medicinal uses. *Phytother Res* 2007; 21: 17-25.
7. Zhou Jr Yu L, Zhong Y, Blackburn GL. Soy phytochemicals and tea bioactive components synergistically inhibit androgen-sensitive human prostate tumors in mice. *J Nutr* 2003; 133: 516-521.
8. Budda S, Butryee C, Tuntipopipat S, Rungsipipat A, Wangnathum S, Lee JS, Kupradinun P. Suppressive effects of *Moringa oleifera* Lam pod against mouse colon carcinogenesis induced by azoxymethane and dextran sodium sulfate. *Asian Pac J Cancer Prev* 2011; 12: 3221-3228.
9. Pamok S, Saenphet S, Vinitketkumnuem U, Saenphet K. Anti-Proliferation effect of *Moringa oleifera* and *Psenderanthera palatiferum* extracts on the colon cancer cell. *J Med Plants Res* 2012; 6: 139-145.
10. Guevara AP, Vargas C, Sakurai H, Fujiwara Y, Hashimoto K, Maoka T, Kozuka M, Ito Y, Tokuda H, Nishino H. An antitumor promoter from *Moringa oleifera* Lam. *Mutat Res* 1999; 6: 181-188.
11. Bose CK. Possible role of *Moringa oleifera* Lam. root in epithelial ovarian cancer. *Med Gen Med* 2007; 9: 26.
12. Peixoto JRO, Silva GC, Costa RA, Fontenelle JLS, Vieira GHF, Filho AAF, Vieira RHSF. In vitro antibacterial effect of aqueous and ethanolic *Moringa* leaf extracts. *Asian Pac J Trop Med* 2011; 4: 201-204.
13. Chuang P, Lee C, Chou J, Murugan M, Shieh B, Chen H. Anti-fungal activity of crude extracts and essential oil of *Moringa oleifera* Lam. *Bioresour Technol* 2007; 98: 232-236.
14. Sreelatha S, Jeyachitra A, Padma PR. Antiproliferation and induction of apoptosis by *Moringa oleifera* leaf extract on human cancer cells. *Food Chem Toxicol* 2011; 49: 1270-1275.
15. Vongsak B, Sithisarn P, Gritsanapan W. Simultaneous determination of crypto-chlorogenic acid, isoquercetin, and astragalin contents in *Moringa oleifera* leaf extracts by TLC-densitometric method. *Evid Based Complement Alternat Med* 2013; 917609. doi: 10.1155/2013/917609. Epub 2013 Feb 25.
16. Cho IH, Gong JH, Kang MK, Lee EJ, Park JH, Park SJ, Kang YH. Astragalin inhibits airway eotaxin-1 induction and epithelial apoptosis through modulating oxidative stress-responsive MAPK signaling. *BMC Pulm Med* 2014; 29: 122. doi: 10.1186/1471-2466-14-122.
17. Vongsak B, Mangmool S, Gritsanapan W. Antioxidant activity and induction of mRNA expressions of antioxidant enzymes in HEK-293 cells of *Moringa oleifera* leaf extract. *Planta Med* 2015; 81: 1084-1089.
18. Valentová K, Vrba J, Bancelířová M, Ulrichová J, Křen V. Isoquercetin: pharmacology, toxicology, and metabolism. *Food Chem Toxicol* 2014; 68: 267-282.
19. Huang WY, Cai YZ, Zhang Y. Natural phenolic compounds from medicinal herbs and dietary plants: potential use for cancer prevention. *Nutr Cancer* 2010; 62: 1-20.
20. Ye Q, She QB. Integration of AKT and ERK Signaling Pathways in Cancer: Biological and Therapeutic Implications. *J Pharmacol Clin Toxicol* 2013; 1(2): 1009.
21. Tragulpakseerojn J, Yuki R, Honda T, Morii M, Apirakaramwong A, Yamaguchi N, Pamonsinlapatham P, Yamaguchi N. Apoptotic activities of the extract from *Moringa oleifera* leaves on human HCT 116 colon cancer cells. *Fund Toxicol Sci* 2014; 1: 143-149.
22. Robard K. Strategies for the determination of bioactive phenols in plants, fruit and vegetables. *J Chromatogr A* 2003; 1000: 657-691.
23. Kazuma K, Noda N, Suzuki M. Flavonoid composition related to petal color in different lines of *Clitoria ternatea*. *Phytochem* 2003; 64: 1133-1139.
24. Kazuma K, Noda N, Suzuki M. Malonylated flavonol glycosides from the petals of *Clitoria ternatea*. *Phytochem* 2003; 62: 229-237.
25. Khoogar R, Kim BC, Morris J, Wargovich MJ. Chemoprevention in gastrointestinal physiology and disease. Targeting the progression of cancer with natural products: a focus on gastrointestinal cancer. *Am J Physiol Gastrointest Liver Physiol* 2016; 310(9): G629-G644.
26. Leone A, Fiorillo G, Criscuoli F, Ravasenghi S, Santagostini L, Fico G, Spadafranca A, Battezzati A, Schiraldi A, Pozzi F, di Lello S, Filippini S, Bertoli S. Nutritional characterization and phenolic profiling of *Moringa oleifera* Leaves grown in Chad, Sahrawi Refugee Camps, and Haiti. *Int J Mol Sci* 2015; 16(8): 18923-18937.
27. Berkovich L, Earon G, Ron I, Rimmon A, Vexler A, Lev-Ari S. *Moringa oleifera* aqueous leaf extract down-regulates nuclear factor-kappa B and increases cytotoxic effect of chemotherapy in pancreatic cancer cells. *BMC Complement Altern Med* 2013; 13: 212.
28. Yi J, Wu JG, Wu YB, Peng W. Antioxidant and anti-proliferative activities of flavonoids from *Bidens pilosa* L var *radiata* Sch Bip. *Trop J Pharm Res* 2016; 15(2): 341-348.