

## Effects of chromium on seed germination, root elongation and coleoptile growth in six pulses

\*R. Jun; T. Ling; Z. Guanghua

School of Environmental and Municipal Engineering and Institute of Environmental Ecology, Lanzhou Jiaotong University, Lanzhou, Lanzhou University, Lanzhou 730070, Gansu, P. R. China

Received 14 November 2008; revised 16 April 2009; accepted 5 August 2009; available online 1 September 2009

**ABSTRACT:** The ecotoxicological effects of Cr<sup>2+</sup> on germination and early seedling growth of six pulses were investigated. Seeds of these plants were exposed to seven different concentrations of Cr (0-3.2 mM). The results indicated that root elongation and coleoptile growth of six pulse plants were more sensitive than seed germination for measurement of the toxic of Cr<sup>2+</sup> pollutions. Different species show different levels of tolerance to Cr<sup>2+</sup> pollution. *Lablab purpureus* and *Glycine max* are the most sensitive to Cr<sup>2+</sup>, their germination percentage, root and coleoptile length were significantly lower than other tested species, by contrast, *Lathyrus odoratus* and *Dumasia villosa* are the most resist species, their germination and seedling growth almost were not influenced by Cr<sup>2+</sup> pollution significantly comparing the control. There were significantly negatively correlations between seedling growth and increasing concentration of Cr<sup>2+</sup> for *Glycine max*, *Vigna radiate* and *Lablab purpureus*. The significantly negative correlations between germination and increasing concentration of Cr<sup>2+</sup> were shown for *Glycine max*, *Vigna radiate* and *V. angularis*.

**Keywords:** Chromium; Coleoptile growth; Germination; Pulse; Root elongation

### INTRODUCTION

Chromium is important for metallurgical industry. Its salts are used in many industrial processes and product such as, steel production, electroplating, leather tanning, metal finishing, metal corrosion inhibition, textile paints and pigment manufacture, catalysts application, drilling muds, fungicides and nuclear weapons production and hence are present in effluents of those industries and in municipal sewage (Wong *et al.*, 2001; Zayed and Terry, 2003; Nath *et al.*, 2005; Babel and Opiso, 2007; Venkateswaran *et al.*, 2007). Chromium is the second most common heavy-metal contaminant in groundwater, soil and sediments (Wong *et al.*, 2001; Srivastava and Thakur, 2006; Shrestha *et al.*, 2007; Kar *et al.*, 2008; Ogundiran and Afolabi, 2008) and although in higher concentration, chromium ions which are more or less insoluble in the soils, can create potentially toxic environments for plant growth (Hasnain and Sabri, 1997; Wong *et al.*, 2001; Srivastava and Thakur, 2006). Chromium phytotoxicity has been considered to be inhibitory for plant growth, its presence in excess amount within the plant can cause stunted shoot growing, root developing poorly (Bishnoi *et al.*, 1993; Citterio *et al.*, 2003; Dube *et al.*, 2003; Faisal and

Hasnain, 2005; Gbaruko and Friday, 2007). Chromium toxicity in plants also leads to leaves chlorosis, tissue necrosis, decreases enzyme activity, causes membrane damage, diminished photosynthesis and changing of chloroplast (Jain *et al.*, 2000; Parmar *et al.*, 2002; Du *et al.*, 2003; Dube *et al.*, 2003; Zayed and Terry, 2003; Scoccianti *et al.*, 2006). The toxicity of chromium and chromium-content in plants, however, is species specific. Much research has been conducted to determine the toxic effects of chromium on different plant species (Hasnain and Sabri, 1997; Jain *et al.*, 2000; Ren and Gao, 2000; Peralta *et al.*, 2001; Zeid, 2001; Manjappa *et al.*, 2002; Dube *et al.*, 2003; Zhou and Li, 2003; 2004; Faisal and Hasnain, 2005; Gardea-Torresdey *et al.*, 2005; Jamal *et al.*, 2006; Li and Yang, 2006; Karbassi *et al.*, 2008). However, little information is available on the ecological effects and toxicity of chromium on 6 pulse plants (Leguminosae) which are widely cultivated around the world as crop species. These pulse plants can uptake heavy metal from polluted soil (Bishnoi *et al.*, 1993). The heavy metals accumulated by pulse plants can threat health of human by entering the food chain as food or fodder. The present study was undertaken with a view to find out the toxic effect of chromium on seed germination, root

\*Corresponding Author Email: [renjun@mail.lzjtu.cn](mailto:renjun@mail.lzjtu.cn)  
Tel.: +86931 4938 030; Fax: +86931 7667 661

elongation and coleoptile growth of six pulse crops. With the specific aim of determining: 1) What degree chromium inhibits the six pulse crops' seed germination and seedling growth? 2) Which pulses are most sensitive to chromium? This study was carried out on June of 2008 in Institute of Environmental Ecology, Lanzhou Jiaotong University.

**MATERIALS AND METHODS**

The effects of several doses of  $K_2Cr_2O_7$  (0, 0.1, 0.2, 0.4, 0.8, 1.6 and 3.2 mM) were studied on six pulse crops. Seeds of soybean (*Glycine max* (Linn.)), mung bean (*Vigna radiata* (Linn.) Wilczek.), hyacinth (*Lablab purpureus* (Linn.) Sweet), sweet pea (*Lathyrus odoratus* Linn.), adzuki bean (*Vigna angularis* (Willd.) Ohwietohashi.) and black bean (*Dumasia villosa* DC.) were offered by Gansu Academy of Agricultural Sciences of China. Seeds were surface sterilized in 0.5 % sodium hypochlorite solution for 20 min and washed thoroughly with distilled water. The seeds were germinated in Petri dishes (diameter=150 mm) with double layer of filter paper soaked in distilled water (control) and 0.1-3.2 mM  $CrCl_2$  solutions. The seeds were set under a photoperiod of 12 h and  $30 \pm 1/25 \pm 1$  °C day/night temperature. The seedling was harvested after 96 h

and the germination rate was recorded. A 1-mm radical emergence from seeds was considered seed germination. The root and coleoptile length of 10 germinated seeds were measured at 96 h under each treatment. Data are the results from six separate analyses with 50 seeds in each Petri. Statistical analysis was performed based on STATISTICA (Statsoft, 1993). The data were analyzed through one-way analysis of variance (ANOVA) to determine the effect of treatments and least significant difference (LSD) test were performed to determine the statistical significance of the differences between means of treatments.

**RESULTS AND DISCUSSION**

*Germination under chromium stress*

The germination of pulse seeds occurred at all chromium treatments from 0.0 mM to 3.2 mM for each species (Fig. 1). A two-way ANOVA showed that seed germination was significantly affected by different species ( $F_5 = 4.6022, P < 0.001$ ) and chromium treatment ( $F_6 = 2.9076, P < 0.001$ ) and the absent of a significant interaction demonstrates that the response of all species to chromium concentration was similar, although percentage of germination varies among the species (Table 1).

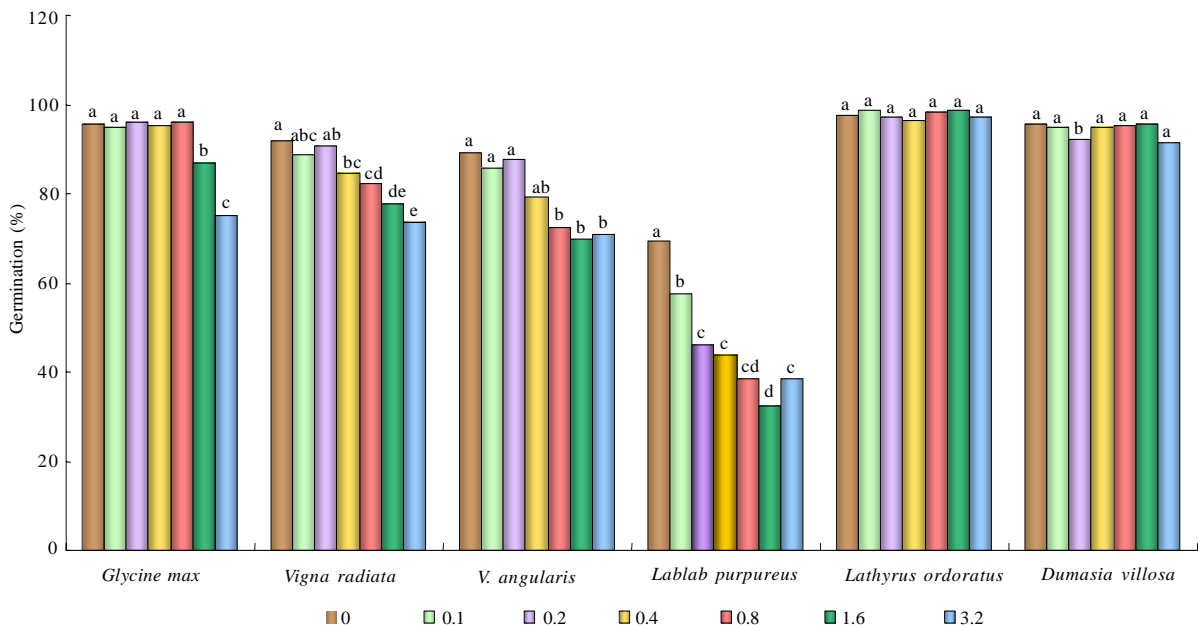


Fig. 1: Germination percentage of six test species under seven different chromium pollution treatments. Values with the same superscript letters are not significantly different among treatments at  $p < 0.01$  according to Duncan's multiple comparison tests

Table 1: The analysis of variance for the effects of different species, chromium treatments and their interaction on seed germination (%), coleoptile and root growth for six pulse species

Traits	Source of variation	df	F-value	P
germination	chromium treatment	6	2.9076	<0.001
	species	5	4.6022	<0.001
	chromium treatment × species	24	1.3071	0.1152
coleoptile growth	chromium treatment	6	2.2858	0.0263
	species	5	2.9165	<0.001
	chromium treatment × species	24	0.9665	0.5507
root elongation	chromium treatment	6	2.2589	0.0281
	species	5	2.0134	0.0074
	chromium treatment × species	24	1.0714	0.3738

The germination was significantly different among chromium treatment and control in 5 pulse species (one-way ANOVA:  $F_{6,35} = 108.82, p < 0.001$  for *Glycine max*;  $F_{6,35} = 9.62, p < 0.001$  for *Vigna radiata*;  $F_{6,35} = 6.20, p < 0.01$  for *V. angularis*;  $F_{6,35} = 18.98, p < 0.001$  for *Lablab purpureus*;  $F_{6,35} = 5.78, p < 0.01$  for *Dumasia villosa*). Only in the case of *Lathyrus odoratus*, its germination was not significantly effected by chromium treatment ( $F_{6,35} = 0.60, p = 0.73$ ) and it performed higher germination percentage and stronger tolerance to chromium. Compared with the control and lower concentration chromium treatments (0.1 and 0.2 mM), higher concentration chromium treatments (1.6 and 3.2 mM) significantly ( $p < 0.001$ ) inhibited germination for *Glycine max*, *Vigna radiata*, *V. angularis* and *Lablab purpureus* (Fig. 1).

The germination was significantly different ( $p < 0.001$ ) among species at six kinds of chromium treatments and one control (Table 2). At all chromium treatments and control, the germination percentages of *Lablab purpureus* was significantly lower than other 5 species ( $p < 0.001$ ). At control and 0.1 mM chromium treatment, the germination percentage of *V. angularis* was significantly higher than *Lablab purpureus* and lower than other 4 species ( $p < 0.001$ ). At control and 0.2, 0.4 and 0.8 mM chromium treatment, the germination percentages of *Glycine max*, *Lathyrus odoratus* and *Dumasia villosa* did not performed significantly difference, and were significantly higher than *Vigna radiata*, *V. angularis* and *Lablab purpureus* ( $p < 0.001$ ), there was not significant difference in germination percentages between *Vigna radiata* and *V. angularis*. At higher concentration chromium treatment (1.6 and 3.2 mM), the germination percentages of *Lathyrus odoratus* and

*Dumasia villosa* did not performed significantly difference and were significantly higher than other 4 species ( $p < 0.001$ ) and there was not significant difference in germination percentages between *Glycine max* and *Vigna radiata* (Table 2). There was a significant negative correlation between the mean percent germination and chromium concentration for *Glycine max*, *Vigna radiata* and *V. angularis* ( $p < 0.001$ ) (Table 3).

#### Coleoptile growth under chromium stress

A two-way ANOVA showed that coleoptile growth was significantly affected by different species ( $F_5 = 2.9165, P < 0.001$ ) and chromium treatment ( $F_6 = 2.2858, P = 0.0263$ ), but not by the interaction between species and chromium treatment (Table 1). The coleoptile length was significantly different among chromium treatments in 3 pulse species (one-way ANOVA:  $F_{6,35} = 5.37, p < 0.001$  for *Glycine max*;  $F_{6,35} = 13.68, p < 0.001$  for *Vigna radiata*;  $F_{6,35} = 14.68, p < 0.001$  for *Lablab purpureus*). For the other 3 pulse species, the coleoptile growth was not significantly different among chromium treatments ( $F_{6,35} = 1.74, p = 0.140$  for *V. angularis*;  $F_{6,35} = 2.64, p = 0.052$  for *Lathyrus odoratus*;  $F_{6,35} = 1.44, p = 0.228$  for *Dumasia villosa*). Compared with the control and shorter concentration chromium treatments (0.1 and 0.2 mM), higher concentration chromium treatments (1.6 and 3.2 mM) significantly inhibited coleoptile growth for *Glycine max*, *Vigna radiata* and *Lablab purpureus*. *Lablab purpureus* performed shorter coleoptile growth at all chromium treatments ( $p < 0.001$ ). Comparing with control, for *Glycine max*, 0.1 mM chromium treatment significantly promoted the coleoptile growth ( $p < 0.001$ ), 0.2 mM and 0.4 mM

Chromium on germination and growth of pulses

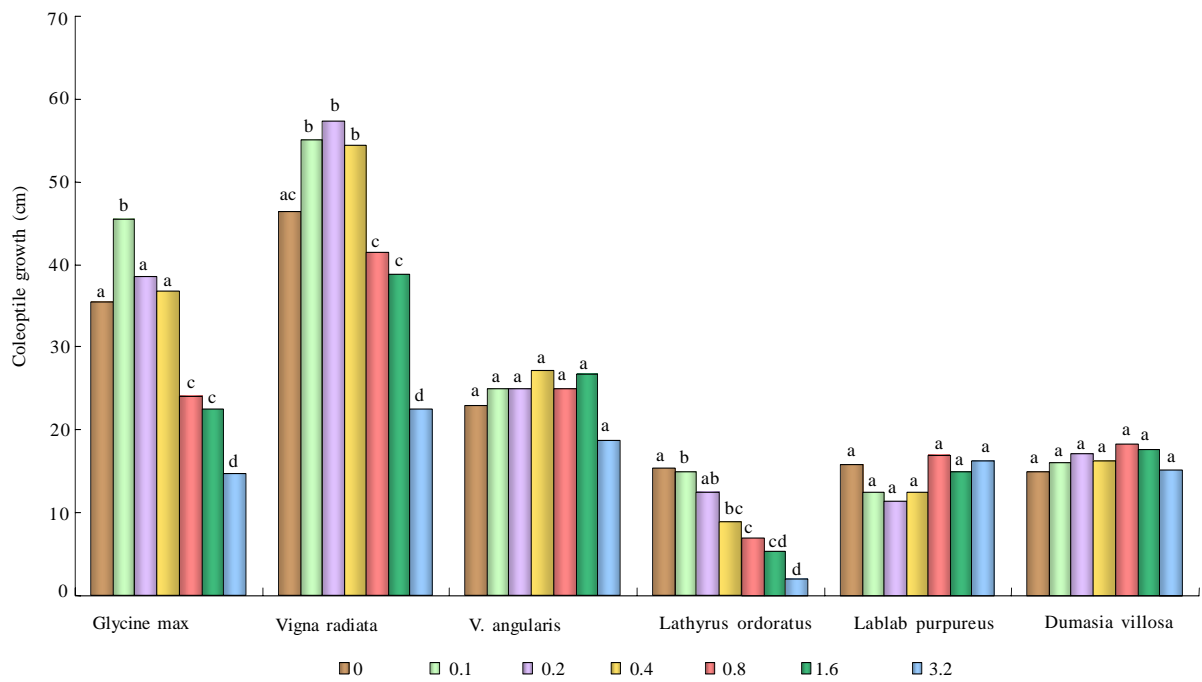


Fig. 2: Coleoptile growth of six species under seven different chromium pollution treatments. Values with the same superscript letters are not significantly different among treatments at  $p < 0.01$  according to Duncan's multiple comparison tests

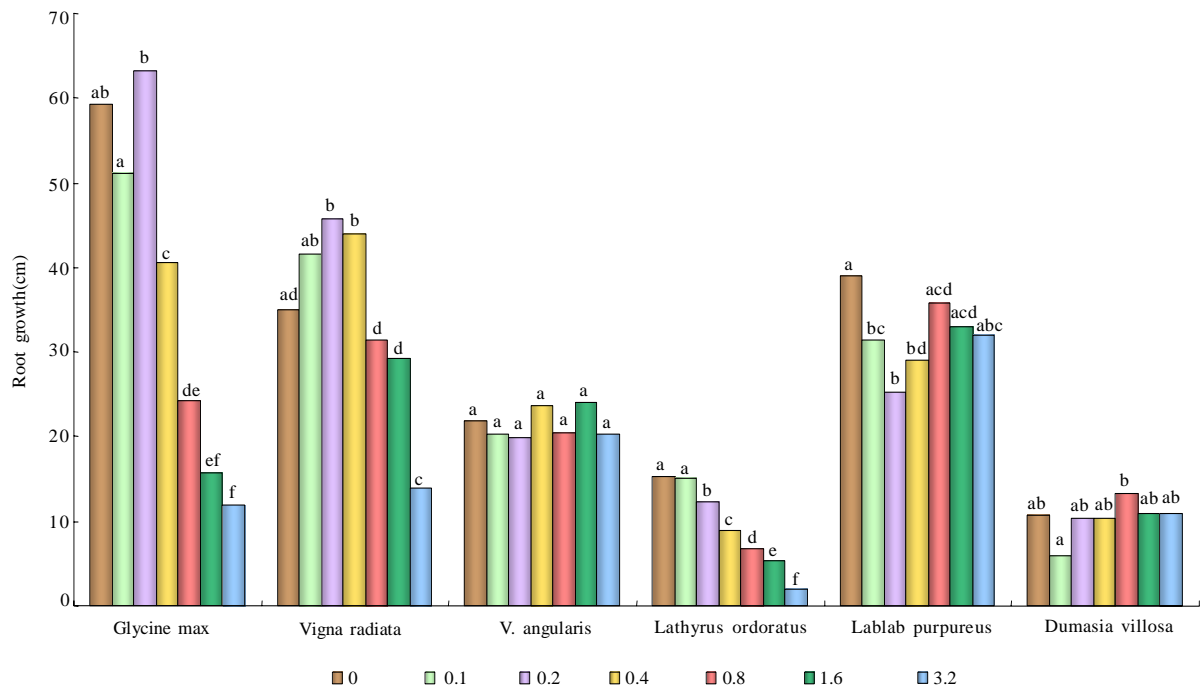


Fig. 3: Root elongation of six species under seven different chromium pollution treatments. Values with the same superscript letters are not significantly different among treatments at  $p < 0.01$  according to Duncan's multiple comparison tests

Table 2: Influence of Cr on seed germination, root elongation and coleoptile growth of six pulses. Results are means±sd. For each attribute the mean values with the same superscript letters among species are not significantly different at 5 % level of probability (Duncan's multiple comparisons test)

Attribute	treatment	Glycine max	Vigna radiate	V. angularis	Lablab purpureus	Lathyrus odoratus	Dumasia villosa	F-value
Germination (%)	0.0 mM	96±0.8	92±2.0	89±4.4	69±3.2	98±6.4	96±4.1	43.57
	0.1 mM	95±1.1	89±1.6	86±5.3	58±1.6	99±5.7	95±10.9	43.86
	0.2 mM	96±0.4	91±1.3	88±6.2	46±4.7	97±3.9	92±5.5	126.15
	0.4 mM	95±1.0	85±1.6	79±4.8	44±2.0	96±9.4	95±10.0	65.35
	0.8 mM	96±2.1	82±1.3	72±3.5	38±1.5	98±8.7	95±5.4	150.40
	1.6 mM	87±2.0	78±2.0	70±6.7	32±3.3	99±10.8	96±7.2	91.34
	3.2 mM	75±3.3	73±2.7	71±6.6	38±2.8	97±9.9	91±3.0	85.91
Coleoptile length (mm)	0.0 mM	35.5±11.3	46.4±7.6	22.9±4.5	15.3±3.7	15.9±3.7	15.0±4.0	24.53
	0.1 mM	45.6±16.3	55.0±10.4	25.0±3.5	14.8±4.6	12.4±3.3	7.5±9.5	26.67
	0.2 mM	38.5±18.2	57.3±7.8	25.1±2.3	12.5±3.9	11.3±4.5	17.3±9.5 <sup>d</sup>	22.08
	0.4 mM	36.7±9.2	54.4±4.4	27.3±3.5	9.0±3.2	12.4±2.5	16.3±8.3	53.16
	0.8 mM	24.2±7.1	41.4±9.3	25.0±3.4	6.8±3.0	16.9±4.0	18.3±9.6	17.86
	1.6 mM	22.5±5.5	38.8±9.0	26.7±4.2	5.4±1.6	14.8±2.8	17.6±4.7 <sup>e</sup>	28.37
	3.2 mM	14.8±4.9	22.6±6.8	18.6±3.6	1.9±1.1	16.3±1.8	15.2±3.7	17.44
Root length (mm)	0.0 mM	59.2±14.5	35.1±12.1	21.9±2.1	15.4±0.9	39.1±5.7	10.6±4.1	28.13
	0.1 mM	51.1±8.2	41.5±7.4	20.3±2.2	15.1±1.1	31.4±7.8	5.9±4.8	48.88
	0.2 mM	63.3±9.5	45.7±6.7	19.9±1.6	12.3±0.4	25.3±5.5	10.3±6.4	75.51
	0.4 mM	40.6±6.4	44.0±7.3	23.6±4.6	9.0±1.0	29.05.1	10.3±4.0	49.43
	0.8 mM	24.3±5.7	31.4±5.4	20.6±4.1	6.8±1.6	35.8±7.0	13.2±5.9	25.71
	1.6 mM	15.6±3.6	29.2±8.0	24.0 ±3.5	5.3±1.4	33.1±2.4	10.9±4.4	36.47
	3.2 mM	11.9±3.6	13.91.9	20.2±2.8	2.1±0.6	32.14.8	10.9±4.1	57.25

chromium treatments had no significant influence on coleoptile growth and for *Vigna radiata*, lower chromium treatments (0.1, 0.2 and 0.4 mM) significantly promoted the coleoptile growth ( $p < 0.001$ ) (Fig. 2).

The coleoptile growth was significantly different among species at six kinds of chromium treatments and one control ( $p < 0.001$ ) (Table 2). The coleoptile growth of *Lablab purpureus* decreased with addition of chromium concentration (Fig. 2). At control treatment, *Glycine max* and *Vigna radiata* did not performed significant difference in the coleoptile growth, but their coleoptile growth was significantly higher than other 4 species ( $p < 0.001$ ). At higher chromium treatments (0.4, 0.8, 1.6 and 3.2 mM), *Glycine max* and *Vigna radiata* performed significant difference ( $p < 0.001$ ) and their coleoptile growth was both significantly higher than other 4 species ( $p < 0.001$ ) and the coleoptile growth of *Lablab purpureus* was significantly shorter than other 5 species ( $p < 0.001$ ). At 1.6 and 3.2 mM chromium treatment, the coleoptile growth of *Vigna radiata* was significantly higher than 5 species and *Lablab purpureus* was significantly shorter than other 5 species ( $p < 0.001$ ) (Table 2). There was a significant negative correlation between the mean coleoptile length and chromium concentration for three species (*Glycine max*:  $y = 38.58 - 0.89x$ ,  $r^2 = 0.79$ ,  $F_{1,5} = 18.26$ ,  $p = 0.0079$ ; *Vigna radiata*:  $y = 53.93 - 0.92x$ ,  $r^2 = 0.85$ ,  $F_{1,5} = 29.28$ ,  $p = 0.0029$ ; *Lablab purpureus*:  $y = 12.94 - 0.90x$ ,  $r^2 = 0.81$ ,  $F_{1,5} = 21.06$ ,  $p = 0.0059$ ).

#### Root elongation under chromium stress

A two-way ANOVA showed that root elongation was significantly affected by different species ( $F_5 = 2.0134$ ,  $P = 0.0074$ ) and chromium treatment ( $F_6 = 2.2589$ ,  $P = 0.0281$ ), but not by the interaction between species and chromium treatment (Table 1). The root length was significantly different among chromium treatments in five pulse species (one-way ANOVA:  $F_{6,35} = 39.47$ ,  $p < 0.001$  for *Glycine max*;  $F_{6,35} = 12.81$ ,  $p < 0.001$  for *Vigna radiata*;  $F_{6,35} = 3.78$ ,  $p = 0.005$  for *Dumasia villosa*;  $F_{6,35} = 136.51$ ,  $p < 0.001$  for *Lablab purpureus*;  $F_{6,35} = 3.69$ ,  $p = 0.006$  for *Lathyrus odoratus*). For *V. angularis*, the root elongation was not significantly different among chromium treatments. Compared with the control and shorter concentration treatments (0.1, 0.2 and 0.4 mM), highest concentration chromium

treatments (0.8, 1.6 and 3.2 mM) significantly inhibited root elongation for *Glycine max* ( $p < 0.001$ ). For *Vigna radiata*, the root length dramatically decreased at 3.2 mM chromium treatment and was significantly shorter than other species ( $p < 0.001$ ). The root elongation of *Lablab purpureus* performed decline with increase of chromium concentration. The root elongation of *Dumasia villosa* was not effected by chromium treatments comparing with the control (Fig. 3).

There was significantly difference of root elongation among species ( $p < 0.001$ ) at six kinds of chromium treatments and one control (Table 2). At control treatment and lower chromium concentration treatments (0.1 and 0.2 mM), the root length of *Glycine max* was significantly longer than other 5 species ( $p < 0.001$ ); the root lengths of *Lablab purpureus* and *Dumasia villosa* were significantly shorter than other 4 species ( $p < 0.001$ ); the root lengths of *Vigna radiata* was significantly shorter than *Glycine max* and longer than other 4 species ( $p < 0.001$ ). At higher chromium concentration treatments (1.6 and 3.2 mM), there was not significant difference between *Glycine max* and *Dumasia villosa*. The root length of *Lablab purpureus* was significantly shorter than other 5 species (Table 2). There was a significant negative correlation between the mean coleoptile length and chromium concentration for three species (*Glycine max*:  $y = 51.85 - 15.41x$ ,  $r^2 = 0.85$ ,  $F_{1,5} = 12.69$ ,  $p = 0.0162$ ; *Vigna radiata*:  $y = 42.25 - 8.71x$ ,  $r^2 = 0.83$ ,  $F_{1,5} = 24.92$ ,  $p = 0.0041$ ; *Lablab purpureus*:  $y = 12.96 - 3.93x$ ,  $r^2 = 0.80$ ,  $F_{1,5} = 19.42$ ,  $p = 0.0070$ ).

Chromium is very important for the normal growth of plants, although stimulating effects to the additions of Cr on plant growth have been observed by several researchers (Lintschinger *et al.*, 1997), but excessive amount can leads to toxicity. The  $Cr^{2+}$  showed very strong inhibits effect to germination, root and coleoptile growth of the test species, especially at high chromium concentrations and the root and shoot growth were much more sensitive than the germination by this study. High levels of  $Cr^{2+}$  supply can inhibit seed germination and subsequent seedling growth (Zayed and Terry, 2003). In another study, Cr (VI) concentrations up to 2 mM supplied as  $K_2Cr_2O_7$  did not affect germination of pea seeds significantly, this was similar results for *Vigna angularis* and *Lathyrus odoratus* by this

study. However, growth of root and shoot was suppressed at chromium concentrations of 0.5mM. The seed yield was reduced by 75-80 % and even at 0.1 mM Cr seed yield was reduced by about 70 % At Cr(VI) concentration of 0.2 mM (Bishnoi *et al.*, 1993). Munzuroglu and Geckil (2002) demonstrate that inhibition of root elongation is considered to be the first evident effect metal toxicity in plants, may be it's because of the seed coat is able to reduce the amount of Cr<sup>2+</sup> entering the seed, but after the seed germination, chromium is considered strongly toxic because chromium compound in the soil are more or less insoluble as the metal ions are tightly bound to humus and clay particles. Shoot and root after germination have no barrier to protect. Some other studies have the same conclusion (Rout *et al.*, 2000).

## CONCLUSION

This study concluded that seed germination of all the test species were not so sensitive like root and coleoptile elongation to Cr<sup>2+</sup>, root and coleoptile growth of the test species were more accurate to measure the toxic of Cr<sup>2+</sup> pollutions and different species show different levels of tolerance to Cr<sup>2+</sup>. *Lablab purpureus* and *Glycine max* are the most sensitive to Cr<sup>2+</sup>. By contrast, *Lathyrus odoratus* and *Dumasia villosa* are the most resist species.

## REFERENCES

- Babel, S.; Opiso, E. M., (2007). Removal of Cr from synthetic wastewater by sorption into volcanic ash soil. *Int. J. Environ. Sci. Tech.*, 4 (1), 99-107 (9 pages).
- Bishnoi, N. R.; Dua, A.; Gupta, V. K.; Sawhney, S. K., (1993). Effect of chromium on seed germination, seedling growth and yield of peas. *Agr. Ecosyst. Environ.*, 47 (1), 47-57 (11 pages).
- Citterio, S.; Santagostino, A.; Fumagalli, P.; Prato, N.; Ranalli, P.; Sgorbati, S., (2003). Heavy metal tolerance and accumulation of Cd, Cr and Ni by *Cannabis sativa* L. *Plant Soil*. 256 (2), 243-252 (10 pages).
- Du, Y.; He, J. H.; Chen, J. J.; Wei, X. G.; Yang, X. Q.; Wang, S. Y.; He, W. B., (2003). Effects of heavy metals of Pb, Cd and Cr on the growth of vegetables and their uptake. *Acta Horticulturæ Sin.*, 30 (1), 51-55 (5 pages) (in Chinese).
- Dube, B. K.; Tewari, K.; Chatterjee, J.; Chatterjee, C., (2003). Excess chromium alters uptake and translocation of certain nutrients in citrullus. *Chemosphere*, 53 (9), 1147-1153 (7 pages).
- Faisal, M.; Hasnain, S., (2005). Chromate resistant *Bacillus cereus* augments sunflower growth by reducing toxicity Cr (VI). *J. Plant Biol.*, 48 (2), 187-194 (8 pages).
- Gardea-Torresdey, J. L.; Rosa, G.; Peralta-Videa, J. R.; Montes, M.; Cruz-Jimenez, G.; Cano-Aguilera, I., (2005). Differential uptake and transport of trivalent and hexavalent chromium by tumbleweed (*Salsola kali*). *Arch. Environ. Contamin. Toxicol.*, 22 (1), 19-25 (7 pages).
- Gbaruko, B. C.; Friday, O. U., (2007). Bioaccumulation of heavy metals in some fauna and flora. *Int. J. Environ. Sci. Tech.*, 4 (2), 197-202 (6 pages).
- Hasnain, S.; Sabri, A. N., (1997). Growth stimulation of *Triticum Aestivum* seedlings under Cr-stresses by non-rhizospheric pseudomonad strains. *Environ. Pollut.*, 97 (3), 265-273 (9 pages).
- Jain, R.; Srivastava, S.; Madan, V. K.; Jain, R., (2000). Influence of chromium on growth and cell division of sugarcane. *Indian J. Plant Physiol.*, 5 (3), 228-231 (4 pages).
- Jamal, S. N.; Iqbal, M. Z.; Athar, M., (2006). Phytotoxic effect of aluminum and chromium on the germination and early growth of wheat (*Triticum aestivum*) varieties Anmol and Kiran. *Int. J. Environ. Sci. Tech.*, 3 (4), 411-416 (6 pages).
- Kar, D.; Sur, P.; Mandal, S. K.; Saha, T.; Kole, R. K., (2008). Assessment of heavy metal pollution in surfacewater. *Int. J. Environ. Sci. Tech.*, 5 (1), 119-124 (6 pages).
- Karbassi, A. R.; Nouri, J.; Mehrdadi, N.; Ayaz, G. O., (2008). Flocculation of heavy metals during mixing of freshwater with Caspian Sea water. *Environ. Geo.*, 53 (8), 1811-1816 (6 pages).
- Li, Y.; Yang, X. K., (2006). The effects of single Cr and complex pollutants and La on the growth of rice seedlings. *J. of Guizhou Normal University (Natural Sciences)*, 24 (1), 39-42 (4 pages) (in Chinese).
- Lintschinger, J.; Fuchs, N.; Moser, H.; Jager, R.; Hlebeina, T.; Markolin, G.; Gossler, W., (1997). Uptake of various trace elements during germination of wheat, buckwheat and quinoa. *Plant Food Hum. Nutr.*, 50 (3), 223-237 (15 pages).
- Manjappa, S.; Sunitha, D. R.; Puttaiah, E. T., (2002). Studies on the effect of chromium on seed germination of few vegetable crops. *Ecol. Environ. Conserv.*, 8 (2), 195-197 (3 pages).
- Munzuroglu, O.; Geckil, H., (2002). Effects of metals on seed germination, root elongation, and coleoptile and hypocotyl growth in *Triticum aestivum* and *Cucumis sativus*. *Arch. Environ. Contamin. Toxicol.*, 43 (2), 203-213 (11 pages).
- Nath, K.; Saini, S.; Sharma, Y. K., (2005). Chromium in tannery industry effluent and its effect on plant metabolism and growth. *J. Environ. Biol.*, 26 (2), 197-204 (8 pages).
- Ogundiran, O. O.; Afolabi, T. A., (2008). Assessment of the physicochemical parameters and heavy metals' toxicity of leachates from municipal solid waste open dumpsite. *Int. J. Environ. Sci. Tech.*, 5 (2), 243-250 (8 pages).
- Parmar, N. G.; Vithalani, S. D.; Chanda, S. V., (2002). Alteration in growth and peroxidase activity by heavy metals in *Phaseolus* seedlings. *Acta Physiolog. Plant.*, 24 (1), 89-95 (7 pages).
- Peralta, J. R.; Gardea-Torresdey, J. L.; Tiemann, K. J.; Gomez, E.; Arteaga, S.; Rascon, E.; Parsons, J. G., (2001). Uptake and effects of five heavy metals on seed germination and plant growth in alfalfa (*Medicago sativa* L.). *Bull. Environ. Contamin. Toxicol.*, 66 (6), 727-734 (8 pages).
- Ren, A. Z.; Gao, Y. B., (2000). Effects of single and combinative pollutions of lead, cadmium and chromium

- on the germination of *Brassica chinensis* L. Chinese J. Ecol., 19 (1), 19-22 (4 pages) (in Chinese).
- Rout, G. R.; Sanghamitra, S.; Das, P., (2000). Effects of chromium and nickel on germination and growth in tolerant and non-tolerant populations of *Echinochloa colona* (L.) Link. Chemosphere, 40 (8), 855-859 (5 pages).
- Scoccianti, V.; Crinelli, R.; Tirillini, B.; Mancinelli, V.; Speranza, A., (2006). Uptake and toxicity of Cr (III) in celery seedlings. Chemosphere, 64 (10), 1695-1703 (9 pages).
- Shrestha, R.; Fischer, R.; Sillanpää, M., (2007). Investigations on different positions of electrodes and their effects on the distribution of Cr at the water sediment interface. Int. J. Environ. Sci. Tech., 4 (4), 413-420 (8 pages).
- Srivastava, S.; Thakur, I. S., (2006). Evaluation of bioremediation and detoxification potentiality of *Aspergillus niger* for removal of hexavalent chromium in soil microcosm. Soil Biol. Biochem., 38 (7), 1904-1911 (8 pages).
- Venkateswaran, P.; Vellaichamy, S.; Palanivelu, K., (2007). Speciation of heavy metals in electroplating industry sludge and wastewater residue using inductively coupled plasma. Int. J. Environ. Sci. Tech., 4 (4), 497-504 (8 pages).
- Wong, J. W. C.; Lai, K. M.; Su, D. S.; Fang, M., (2001). Availability of heavy metals for *Brassica chinensis* grown in an acidic loamy soil amended with a domestic and an industrial sewage sludge. Water Air Soil Pollut., 128 (3-4), 339-353 (15 pages).
- Zayed, A. M.; Terry, M., (2003). Chromium in the environment: Factors affecting biological remediation. Plant and Soil., 249 (1), 139-156 (18 pages).
- Zeid, I. M., (2001). Responses of *Phaseolus vulgaris* to chromium and cobalt treatments. Biologia Plantarum., 44 (1), 111-115 (5 pages).
- Zhou, X. Q.; Li, Y. H., (2003). Ecological effects of Ca<sup>2+</sup> on the seed germination of *Casuarina equisetifolia* under chromic stress. Chinese J. Ecol., 22 (4), 37-41 (5 pages) (in Chinese).
- Zhou, X. Q.; Li, Y. H., (2004). The physiological and ecological responses of the seed germination of *Casuarina equisetifolia* to chromic stress. Chinese J. Eco-Agri., 12 (1), 53-55 (3 pages).

**AUTHOR (S) BIOSKETCHES**

**Jun, R.**, Ph.D., Professor, School of Environmental and Municipal Engineering and Institute of Environmental Ecology, Lanzhou Jiaotong University, Lanzhou and a postdoctoral researcher in College of Life Science, Lanzhou University, Lanzhou 730070, Gansu, P. R. China. Email: [renjun@mail.lzjtu.cn](mailto:renjun@mail.lzjtu.cn)

**Ling, T.**, Ph.D., Professor, School of Environmental and Municipal Engineering and Institute of Environmental Ecology, Lanzhou Jiaotong University, Lanzhou 730070, Gansu, P. R. China. Email: [taoling@mail.lzjtu.cn](mailto:taoling@mail.lzjtu.cn)

**Guanghua, Z.**, M.Sc. student, School of Environmental and Municipal Engineering and Institute of Environmental Ecology, Lanzhou Jiaotong University, Lanzhou 730070, Gansu, P. R. China. Email: [zhuguanghua@mail.lzjtu.cn](mailto:zhuguanghua@mail.lzjtu.cn)

**How to cite this article: (Harvard style)**

Jun, R.; Ling, T.; Guanghua, Z., (2009). Effects of chromium on seed germination, root elongation and coleoptile growth in six pulses. Int. J. Environ. Sci. Tech., 6 (4), 571-578.